



SOARING

2ND QUARTER 2016 **APRIL - JUNE**



Saturday **June 4th**
9am – 6pm

Sunday **June 5th**
10am – 5pm

Lake Forest Location

Shop over 100 quality pre-owned vehicles from local dealers at Credit Union friendly prices.

- Rates as low as **1.99% APR*** up to 60 months
- **90 days** no payments**
- Financing up to **125% loan-to-value†**
- Trade-ins welcome

*APR=Annual Percentage Rate. Your APR is determined by your credit qualifications. 1.99% rate quoted is the lowest possible rate for Tier 1 borrowers and is available on terms up to 60 months for used vehicles at June auto sale only. Rate includes 0.50% discount for automatic transfer from an Eagle CU checking account, a 0.50% discount for 80% loan-to-value or 0.25% discount applying for 90% LTV. Rate will increase by 1.00% for vehicles over 5 years old, and by 1.00% for vehicles with mileage over 100,000. †Offer is for qualified borrowers only. Interest will accrue from date of loan funding. ‡Maximum loan to value (LTV) is 125% including tax, license, plus maximum service contract \$2500 and maximum GAP \$795. For all trucks, vans, and SUVs, we will finance the same as indicated or the cash selling price, whichever is less. Restrictions may apply. There are no application fees on vehicle and consumer loans. Rates, terms, and conditions are subject to change without notice.

Eagle has all of your auto needs covered full circle!

Find your next new or used vehicle with our autobuying partners, finance or refinance a new or pre-owned vehicle with us, and then let us help you insure it.

Learn more at www.eaglecu.org/autoneeds



APRIL						
SUN	MON	TUE	WED	THUR	FRI	SAT
						2
3	4	5	6	7		8
10	11	12	13			16
17	18	19	20	21		23
24	25	26		28	29	30

MAY						
SUN	MON	TUE	WED	THUR	FRI	SAT
1	2	3	4	5		7
8	9	10	11	12		
15	16	17	18		20	21
22	23	24	25	26	27	28
29		31				

JUNE						
SUN	MON	TUE	WED	THUR	FRI	SAT
			1	2		
	6	7	8	9		11
12	13	14	15		17	18
19	20	21	22	23	24	25
	27	28	29	30		

Important Dates:

April 1: April Fools' Day & Youth Month Begins

April 22: Earth Day

April 27: Annual Meeting of the Membership

May 14: Stamp Out Hunger Food Drive

May 30: Memorial Day - Observed

June 4 & 5: Pre-Owned Auto Sale - Lake Forest

June 26: Angels Postal & Federal Appreciation Game

Home Loan Consultant Branch Day See pg. 3 for details

EAGLE
COMMUNITY
CREDIT UNION
www.eaglecu.org
(800) EAGLE CU



Notes from the CEO Scott Rains

We are very excited for our Spring Promotions! In April we celebrate our kids all month. Special promotions and giveaways will be in our branches so make sure to come by to check it out. Our Annual Meeting of the Membership is planned for the end of April on Wednesday, April 27th. This is an annual event where our Board of Directors presents our financials from the previous year and provides some insight on how the Credit Union is doing overall. I'm looking forward to this year's Annual Meeting as it will be my first as CEO. Please join us at our Lake Forest Branch for light refreshments and to take part in the meeting that starts at 5pm – after all you are a member shareholder of Eagle.

On Saturday, May 14th, we are supporting an effort near and dear to our hearts, the National Association of Letter Carrier's Stamp Out Hunger Food Drive. Eagle Community Credit Union will once again sponsor bags along with a few of our financial partners; CO-OP Financial Services and Total Environmental Management. Your postal carrier will deliver the bags on Thursday, May 12th. Fill your bag with non-perishable canned goods and leave them out on Saturday the 14th and your mail carrier will pick them up. You can also drop your donations off at any Eagle Branch prior to the 14th.

With graduations just around the corner, May can also mean it's time to start thinking about college planning. Eagle Community Credit Union offers student loans through our

partner Sallie Mae®. We also have a first-time secured credit card that is perfect for students. If you are, or you know of a soon-to-be college student, please stop by your local branch to find out more information. Did you know that Eagle also has a College Scholarship Program? This year we increased our scholarship offerings to a total of \$12,000! Three deserving college student members will be chosen. The scholarships are open to all members. Applications will be available on Eagle's website starting May 1st. More details about our College Scholarship Program and how to apply will be available in May.

We will end the Spring with our annual Pre-Owned Auto Sale in the parking lot of our Lake Forest Branch the weekend of June 4 and 5. This is a very popular event and this year we will have even more quality pre-owned vehicles to choose from with special pricing and financing just for our members! Stop by to check it out and enjoy free hotdogs and refreshments!

To kickoff summer, we are partnering with the Angel's for a Postal and Federal Employee Appreciation Game on Sunday, June 26th. Join us in Anaheim to come watch the Angel's take on Oakland. More information on our discounted tickets will be available at the end of May.

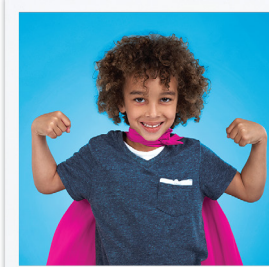
I am excited about our 2nd Quarter here at Eagle. We are pleased to announce our new CFO is Mary Roberts. Mary brings 26 years of financial experience and we are excited to have her be a part of the Eagle family. We have so many great opportunities ahead! Please stop by and see us soon. And, as always, please let me know how we're doing and how we can serve you better.



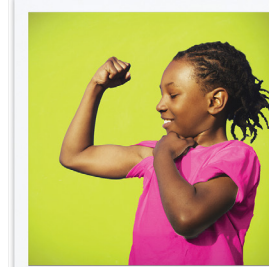
Send Scott Rains Eagle Community CU's CEO, an email and talk to him personally. Reach Scott at: ceo@eaglecu.org

April is YOUTH MONTH!

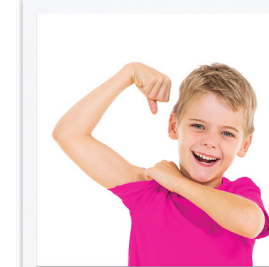
Get Eagle Credit Union Strong during the month of April and celebrate National Credit Union Youth Month™.



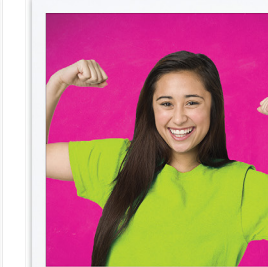
PUMP UP YOUR SAVINGS!



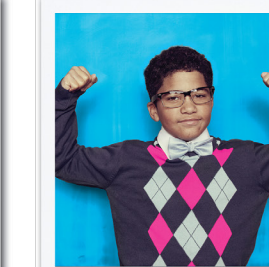
GET MONEY FIT!



SPEND LEAN!



EVERY PENNY COUNTS!



MAKE YOUR FUTURE AWESOME!

We will show youth and teens how to get CU Strong! Stop by any of our branches for:

- Giveaways; coloring pages, flying rings, stickers and more!
- Plus, new youth accounts (age 17 and under) are entered in to win \$250!

#EAGLECUSTRONG

And remember, Eagle membership is open to all immediate members of your family.

Copyright 2016 Credit Union National Association Inc. Information subject to change without notice. For use with members of a single credit union. All other rights reserved. *NO PURCHASE NECESSARY. Open to new members of Eagle Community Credit Union 17 years old and under between April 1 – 30, 2016. One prize of a \$250 deposit into their account. The odds of winning a prize depends on the total number of eligible entries received. Winner announced the end of April. Members responsible for all applicable taxes. Eagle CU employees, volunteers and family members not eligible. Mail-in entries for the drawing must be postmarked by April 29th and be received by April 30, 2015. Sweepstakes subject to eligibility and prize restrictions. Official Rules are available at www.eaglecu.org/sweepstakes. Sponsored by Eagle Community Union, 23021 Lake Center Drive, Lake Forest, CA 92630. Not valid with any other offers.

GAB & GET PAID!

April is the last month to refer your friends and family for a chance to win \$200! And when they open an Auto Loan or Credit Card you both get \$25 cash on the spot! Don't wait, refer today! www.eaglecu.org/refer



*NO PURCHASE NECESSARY. Open to members of Eagle Community Credit Union from Jan. 4, 2016 and eligible when referral opens membership by April 30, 2016. Referral must meet Eagle eligibility requirements, see www.eaglecu.org for eligibility. Total approximate value of all prizes is \$800. The odds of winning a prize depends on the total number of eligible entries received for that particular month. One winner announced at the end of each month, Jan-April. Members responsible for all applicable taxes. Eagle CU employees, volunteers and family members not eligible. Mail-in entries for the last drawing must be postmarked by April 29, 2016 and be received by April 30, 2016. Official Rules are available at www.eaglecu.org/sweepstakes. Sponsored by Eagle Community Union, 23021 Lake Center Drive, Lake Forest, CA 92630. Not valid with any other offers. **\$25 offer available to any existing member of Eagle who refers a new member during the promotional period, Jan. 4 – April 30 and the new member funds a new or used auto loan or a new credit card before April 30, 2016. The \$25 will be posted to the account within a week after the loan funds. Members responsible for all applicable taxes. Eagle CU employees, volunteers and family members not eligible.

Annual Meeting of the Membership

All Eagle Members are invited to attend

Wednesday, April 27 5:00 pm

Lake Forest Branch
23021 Lake Center Drive
Lake Forest, CA 92630

Watch for your New EMV Chip-Enabled Credit Card mailing soon!

Learn more about your new chip card and watch a video on how to use it at www.eaglecu.org/chipcards



Loan Consultant Branch Days!

Interested in a home purchase or refinance? Talk to a Mortgage Loan Consultant in our Branches on the following days to discuss any of your mortgage needs between the hours of 9am and 12pm.

April	May	June
Friday, April 8 th Garden Grove Branch	Friday, May 6 th Garden Grove Branch	Friday, June 3 rd Garden Grove Branch
Thursday, April 14 th Lake Forest Branch	Friday, May 13 th Placentia Branch	Friday June 10 th Placentia Branch
Friday, April 15 th Placentia Branch	Thursday, May 19 th Lake Forest Branch	Thursday June 16 th Lake Forest Branch



EAGLE COLLEGE - ESSENTIALS -



2016 College Scholarship

- Open to current college or college bound Eagle members*
- \$12,000 awarded; three winners of \$4,000
- Apply online at www.eaglecu.org starting May 1st - June 30th

Student Loans offered through Sallie Mae®

- Apply online at www.eaglecu.org

Credit Builder Credit Card

- A secured credit card for students to help build credit.

*Eagle CU employees, volunteers and family members not eligible.

Upcoming Eagle Holidays

All credit union branches will be closed in observance of the following holidays:

Memorial Day - Monday, May 30

Contact Eagle

(800) EAGLE CU (324-5328)
www.eaglecu.org

Mailing Address

P. O. Box 5196
Lake Forest, CA 92609-8696

Supervisory Committee
P.O. Box 26577
Santa Ana, CA 92799

Conveniences

CO-OP ATM Locations
(888) SITE-COOP (748-3266)

CU Direct Lending Locations
(888) CU DIRECT (283-4732)

CU Service Center Locations
(888) CU SWIRL (287-9475)

Autoland (800) 234-6999

Mobile App



Branch Locations and Operating Hours

LAKE FOREST 23021 LAKE CENTER DR.
Mon - Thurs: 9 a.m. - 5 p.m.
Fri: 9 a.m. - 6 p.m.
Sat: 9 a.m. - 2 p.m.

GARDEN GROVE 12934 HARBOR BLVD.
Mon - Thurs: 9 a.m. - 5 p.m.
Fri: 9 a.m. - 6 p.m.
Sat: 9 a.m. - 2 p.m.

PLACENTIA 781 KIMBERLY AVE.
Mon - Thurs: 9 a.m. - 5 p.m.
Fri: 9 a.m. - 6 p.m.
Sat: 9 a.m. - 2 p.m.

INDUSTRY† 15421 GALE AVE.
Mon - Fri: 7 a.m. - 5 p.m.

LAGUNA NIGUEL‡ 24000 AVILA RD.
Mon - Fri: 9 a.m. - 1:15 p.m.
and 2 p.m. - 4:30 p.m.

SANTA ANA† 3101 WEST SUNFLOWER AVE.
Mon - Fri: 7 a.m. - 5 p.m.

* Cash available only via ATM at this location.
† Inside post office.
‡ Inside the Federal Building (south entrance).

Save the Date!

Save the Date for Stamp Out Hunger on Saturday, May 14, 2016!



Eagle is once again donating paper bags to help increase food donations in our areas along with help from our partners; CO-OP & Total Environmental Management.



The Eagle team will be stationed at local post offices to help collect, sort and get the food to the local food banks. Don't forget to leave out your canned food by your mailbox on **Saturday, May 14**, or bring it into any of our Branches.



At a recognition event in March, Children's Hospital of Orange County presented Eagle CU with a plaque thanking us for our 2015 CHOC Walk Fundraising efforts. Save the date for the 2016 Halloween themed walk on Sunday, October 30.



Save the date for a two-part webinar on Identity Theft starting April 5th & continuing on April 14th. To register and view upcoming webinars visit: www.eaglecu.org/webinars

Member Spotlight



GAB & GET PAID WINNERS!



John A. (January's winner) & **Steven C.** (February's winner), won \$200 for their referrals! Don't miss out on your chance to win!

